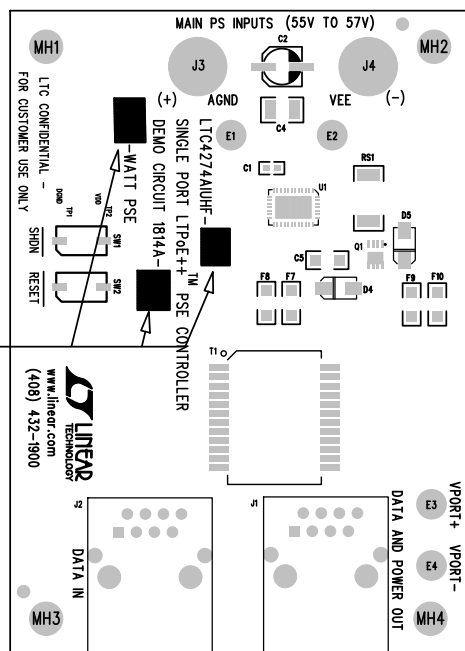


NOTES: UNLESS OTHERWISE SPECIFIED

1. WORKMANSHIP SHALL BE IN ACCORDANCE WITH IPC-A-610.
2. ASSEMBLY PROCESS SHALL INCLUDE: REFLOW SOLDER TOP SIDE SMD. MAXIMUM SOLDER TEMPERATURE IS 240 DEGREES CELSIUS.
3. PARTS TO OMIT WILL BE SPECIFIED ON THE BILL OF MATERIALS. LOCATIONS OF OMITTED PARTS SHALL BE FREE OF SOLDER. MASK THE SOLDER STENCIL WHERE SMT PARTS ARE OMITTED.
4. INSTALL SHUNTS AS SHOWN ON ASSY DRAWING.
5. DEPANELIZE BOARDS AFTER ASSEMBLY AND ROUTE-OUT THE BREAKOUT TABS ON FOUR SIDES OF THE BOARD EDGE.
6. DO NOT APPLY ANY KIND OF ASSEMBLY STAMP OR QA STAMP TO ANY BOARD.



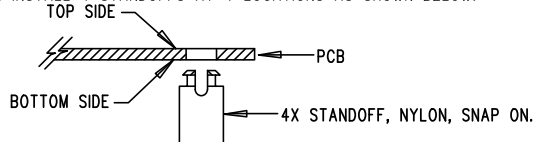
LAYER 1 : TOP LAYER
TOP SILKSCREEN

LINEAR TECHNOLOGY DATE: 05-09-11
DC1814A-LTC4274AIUHF
SINGLE PORT LTPoE++ PSE CONTROLLER

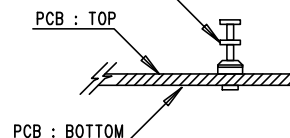
REVISION HISTORY

ECO	REV	DESCRIPTION	APP. ENG.	DATE
-	1	PRODUCTION	DILIAN R.	05-09-11
-	1a	PWR LVL UPDATE	DILIAN R.	10-05-11

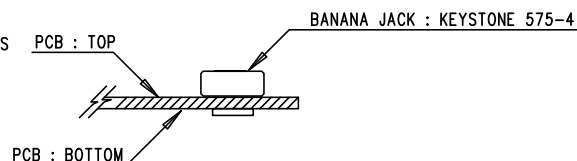
7. INSTALL 4 STANDOFFS AT 4 LOCATIONS AS SHOWN BELOW:



8. INSTALL TURRETS TURRETS : MILL-MAX 2501-2



9. INSTALL BANANA JACKS



10. THERE ARE 4 ASSEMBLY VERSIONS ON THIS DESIGN: -A, -B, -C & -D
WRITE APPROPRIATE ASSEMBLY VERSION, POWER LEVEL AND LTC4274A
DASH NUMBER IN THE WHITE BLOCK AREAS WITH BLACK PERMANENT MARKER.

ASSEMBLY VERSION	-WATT PSE	LTC4274AIUHF-
-A	38.7	-1
-B	52.7	-2
-C	70	-3
-D	90	-4

APPROVALS

PCB DES.	J.K.
APP ENG.	DILIAN R.
SCALE = NONE	



1630 MCCARTHY BLVD
MILPITAS, CA 95035
PH: (408)432-1900
www.linear.com
LTC CONFIDENTIAL -
FOR CUSTOMER USE ONLY

TITLE: TOP ASSEMBLY DRAWING
SINGLE PORT LTPoE++ PSE CONTROLLER

SIZE N/A	IC NO. LTC4274AIUHF FAMILY DEMO CIRCUIT 1814A	REV. 1
-------------	--	-----------

FILENAME: DC1814A-1.PCB SHT 1 OF 2